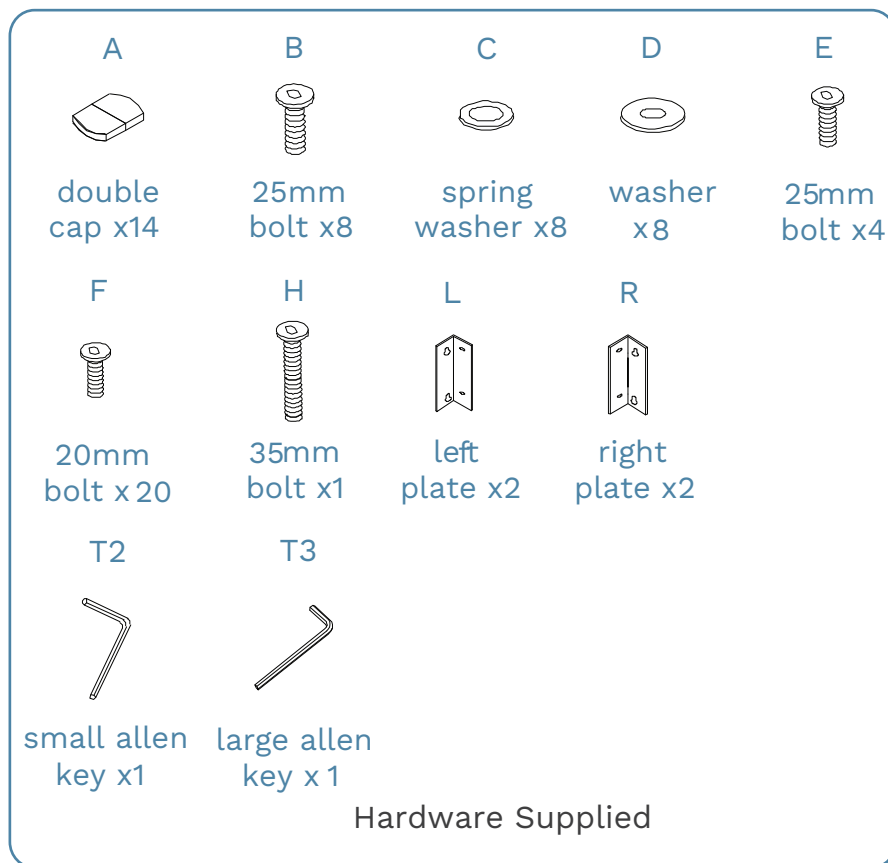


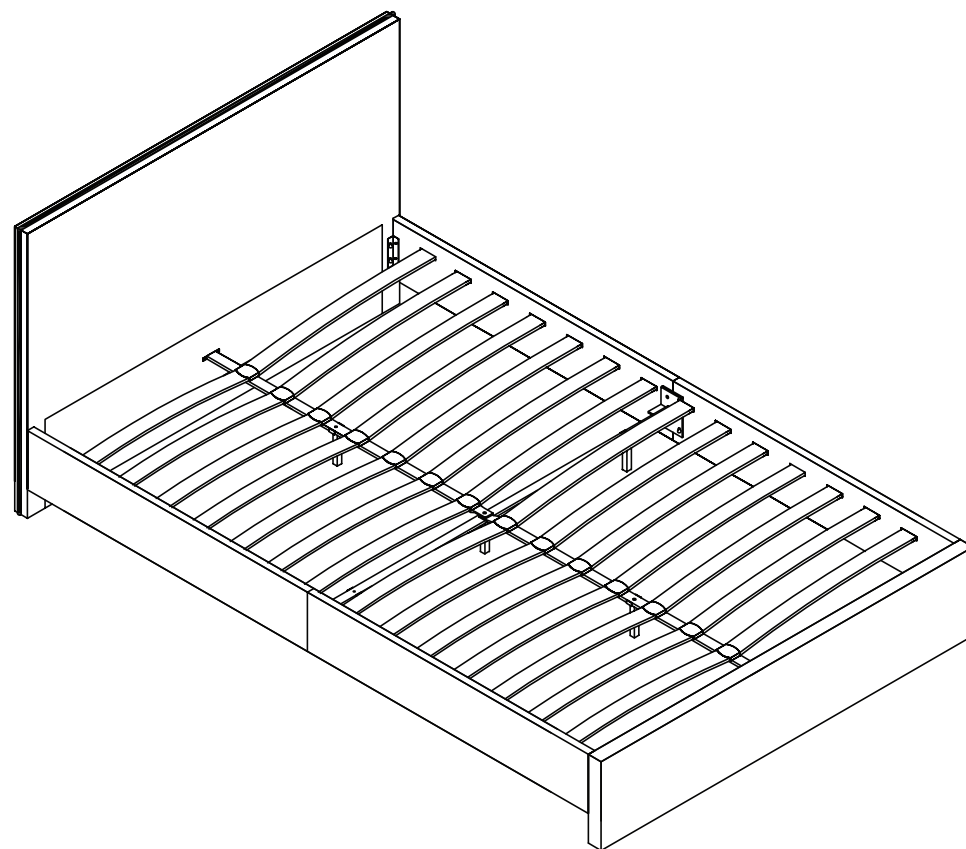
Peyton Bed - Queen

Thank you for purchasing Peyton Bed - Queen. Please follow the manufacturer's assembly instructions in detail.



Phillips & Flathead screwdrivers required.

For quicker assembly, we recommend the use of a power drill on a low-speed setting.

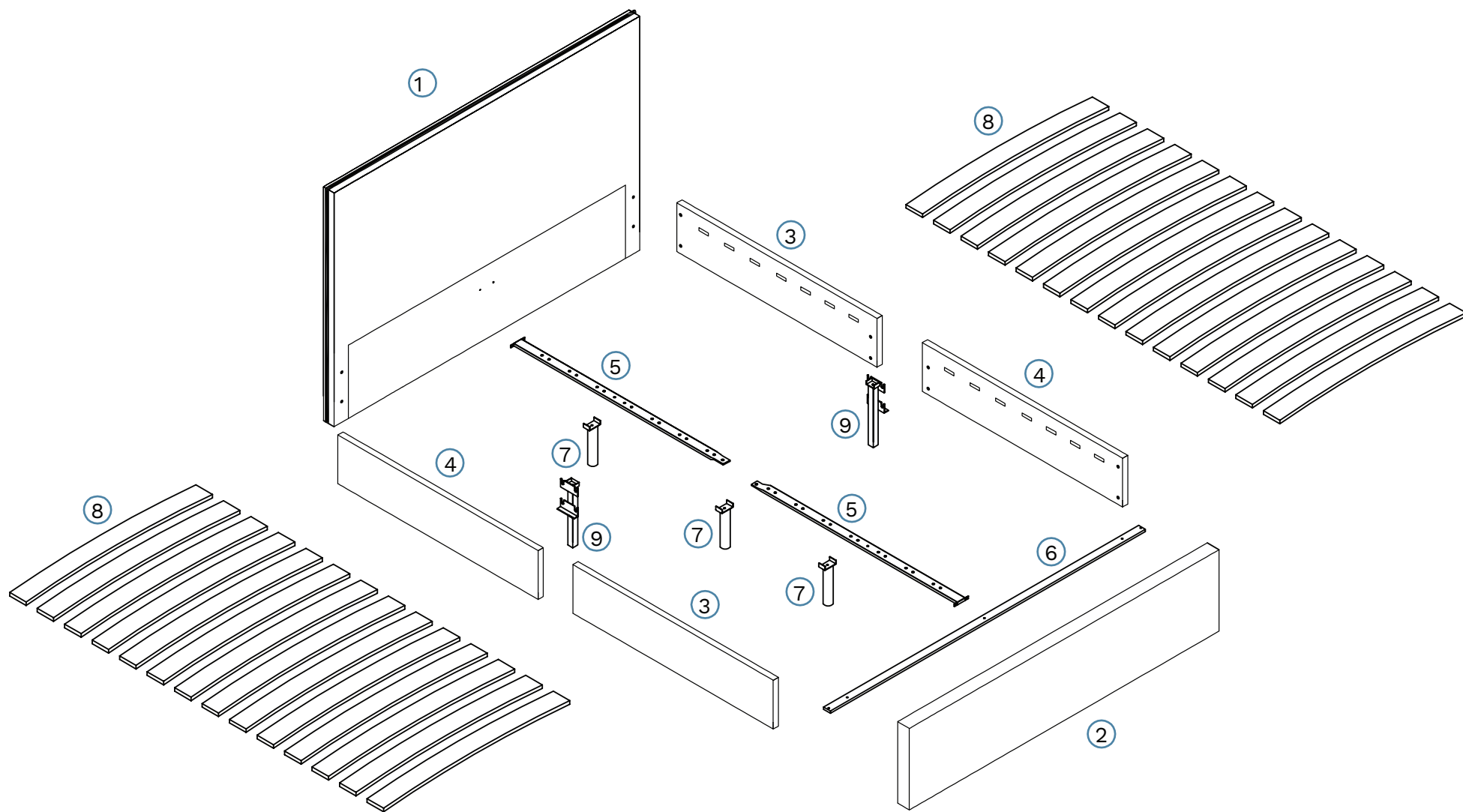


IMPORTANT NOTICE

When moving the bed, please lift off the ground with two people. DO NOT drag, push or pull the bed across the floor, as this can result in damage to the supporting leg.

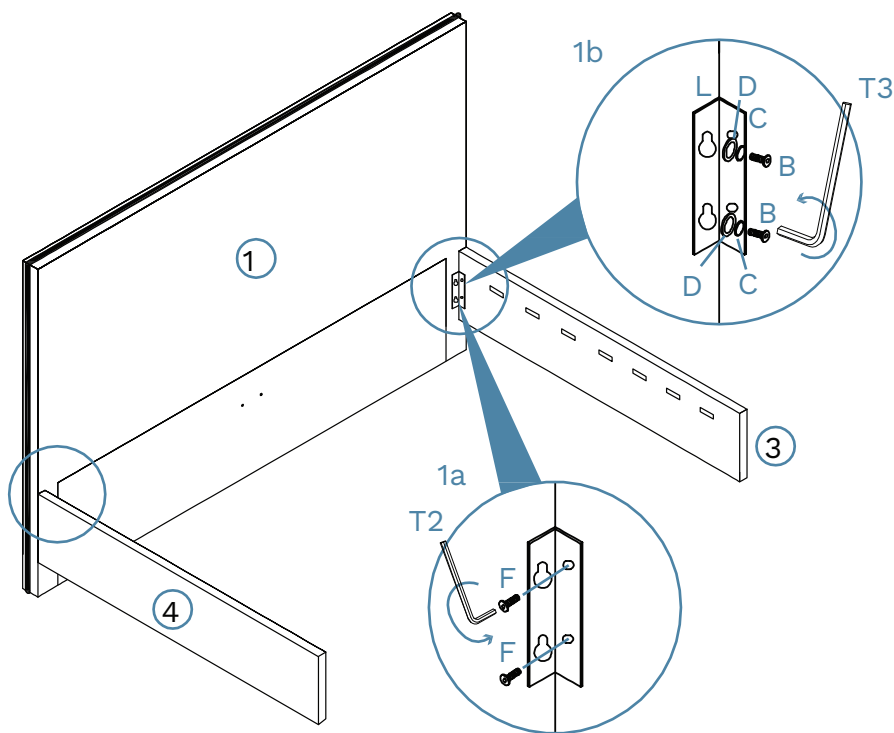
Mocka.

Peyton Bed - Queen



Peyton Bed - Queen

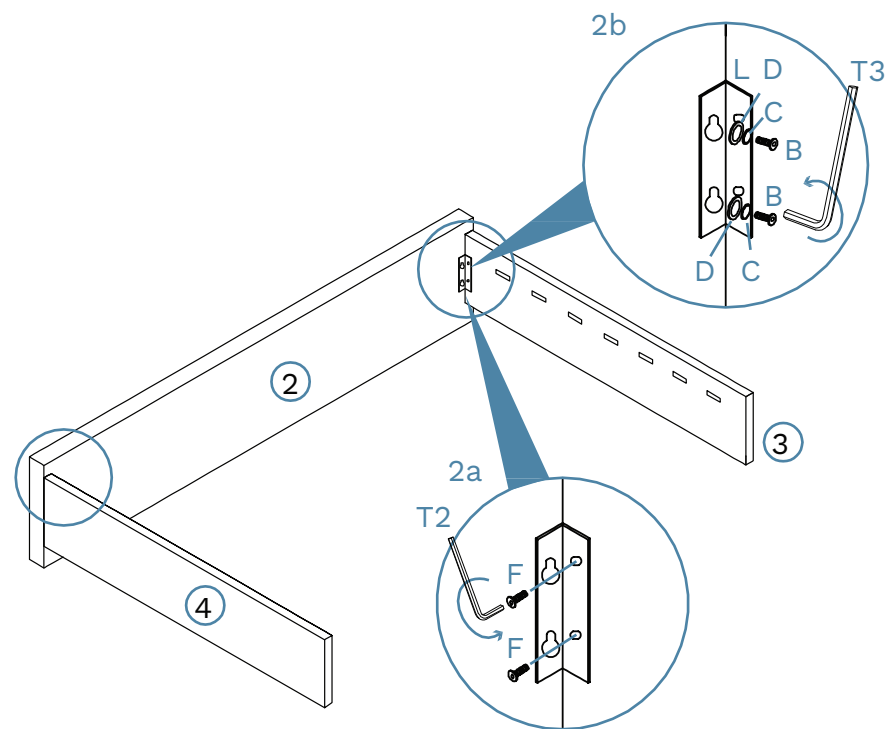
1



1a: Attach 1x left plate (L) to panel [3] and 1x right plate (R) to panel [4] and secure with 4x 20mm bolts (F). Tighten with Allen Key (T2).

1b: Attach panel [3] and panel [4] to panel [1] as shown and secure with 4x spring washers (C), 4x washers (D) and 4x 25mm bolts (B). Tighten with Allen Key (T3).

2

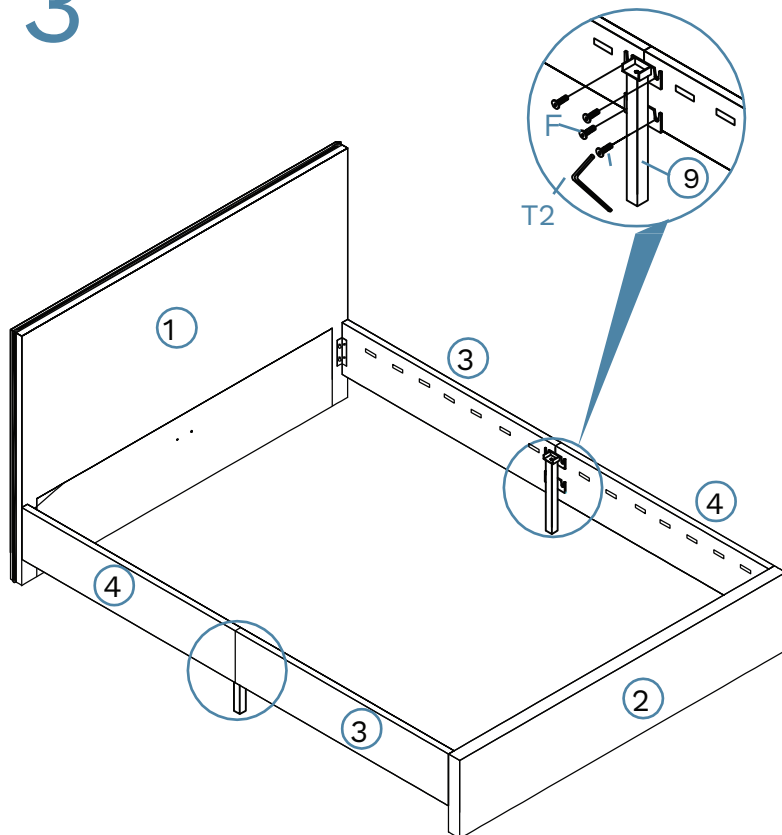


2a: Attach 1x left plate (L) to panel [3] and 1x right plate (R) to panel [4] and secure with 4x 20mm bolts (F). Tighten with Allen Key (T2).

2b: Attach panel [3] and panel [4] to panel [2] as shown and secure with 4x spring washers (C), 4x washers (D) and 4x 25mm bolts (B). Tighten with Allen Key (T3).

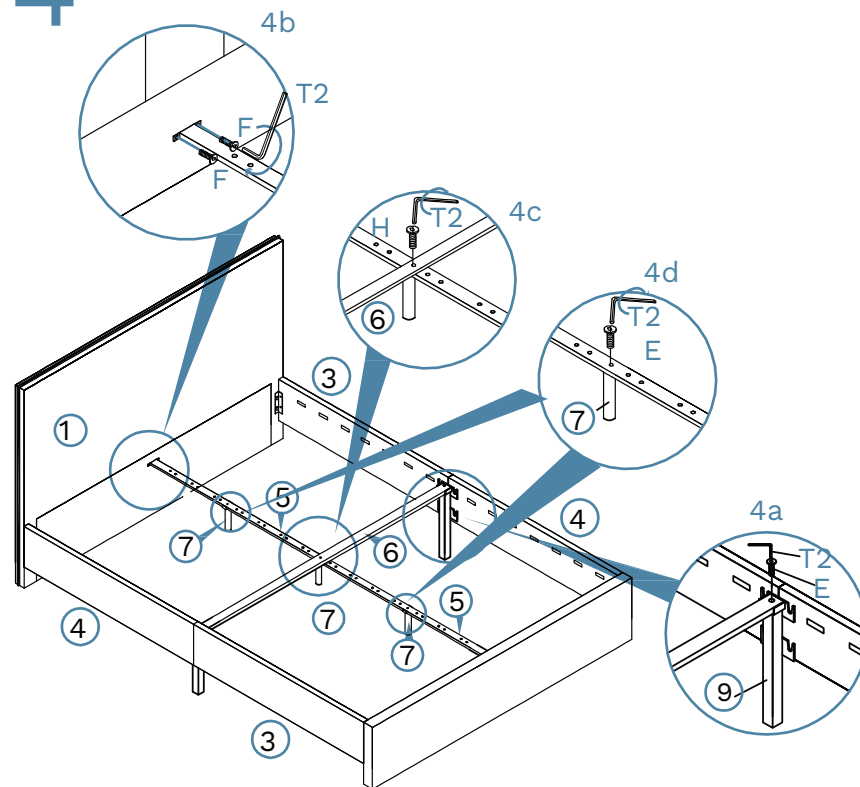
Peyton Bed - Queen

3



Join the 2x side panels [3] and Join the 2x side panels [4] together with 2x connector [9] and secure with 8x 20mm bolts (F). Tighten with Allen Key (T2).

4



4a: Insert panel [6] and sit on top of the connector [9] and secure with 2x 25mm bolts (E). Tighten with Allen Key (T2).

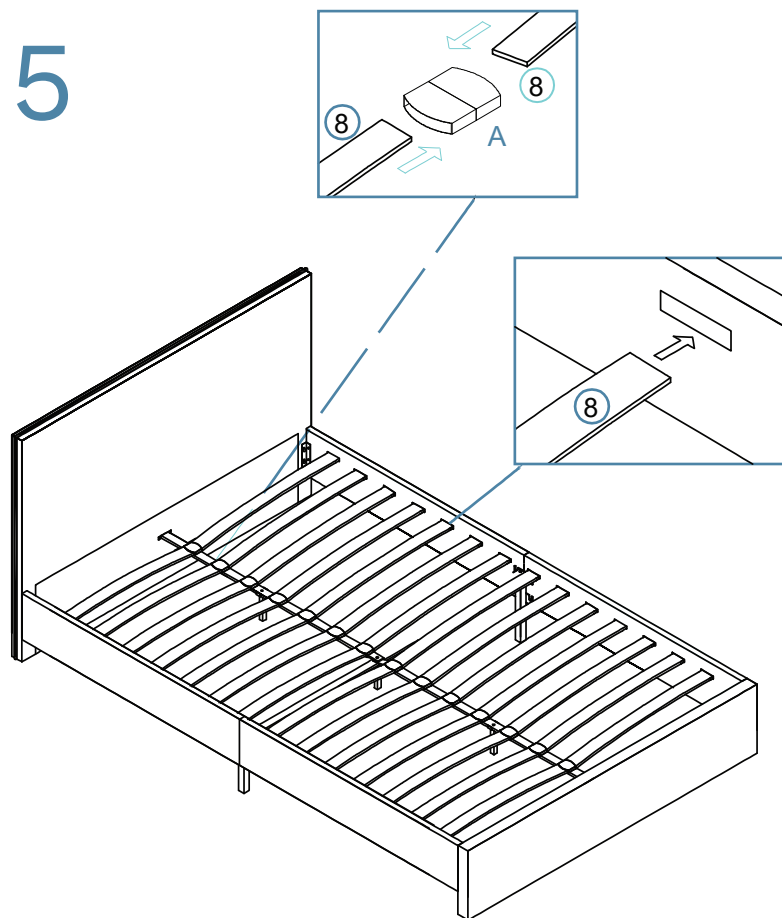
4b: Attach 2x panel [5] to panels [1] and [2] and secure with 4x 20mm bolts (F) as shown. Tighten with Allen Key (T2).

4c: Attach panels [5] and [6] in the middle with 1x support leg [7] and secure with 1x 35mm bolt (H). Tighten with Allen Key (T2).

4d: Attach 2x support legs (7) to panels [5] and [6] as shown and secure with 2x 25mm bolts (E). Tighten with Allen Key (T2).

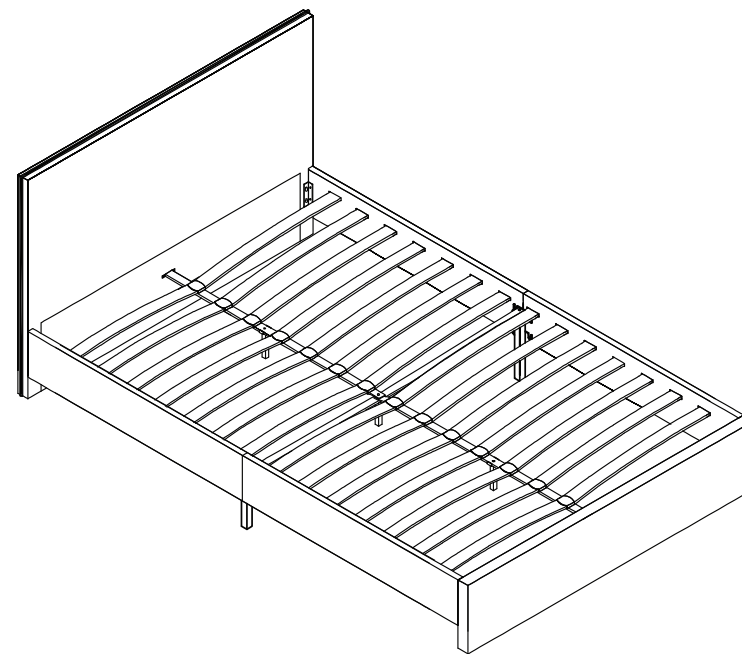
Peyton Bed - Queen

5



Join the bed planks together in the middle of the frame using 14x double caps (A). Insert the end of the planks into the bed frame as shown and attach the double caps (A) into panel [8]. Make sure the double caps (A) click securely into place.

6



Lift the bed into the desired location, do not drag, You're done, enjoy!